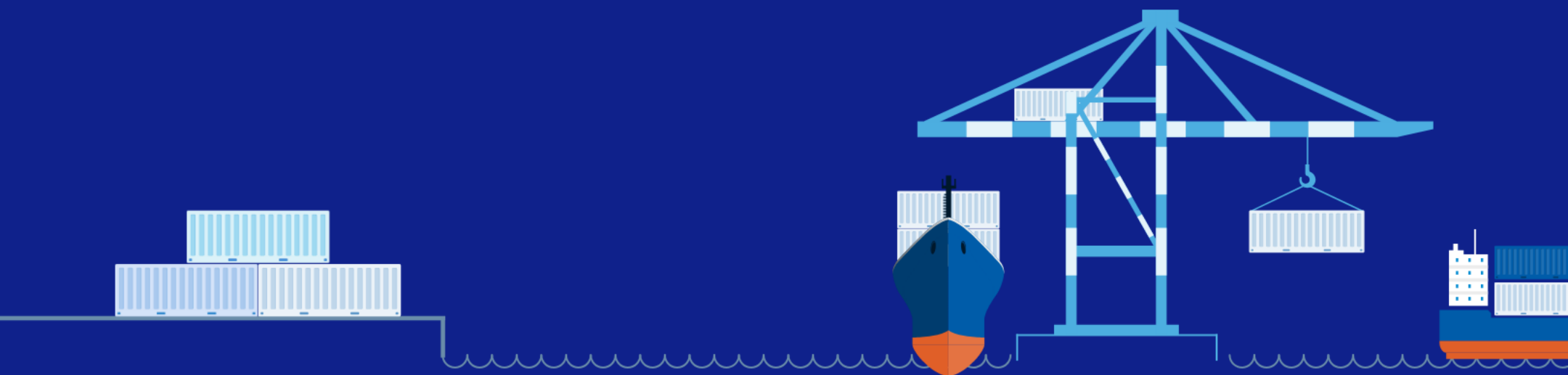


Success Story

KWE Bangladesh



Balancing Cost, Speed, and Sustainability with Sea-Air Solution



In 2024, rising airfreight rates and limited cargo capacity due to airlines prioritizing trans-pacific lanes created a challenging logistics landscape. One of KWE Bangladesh's key apparel clients was impacted, facing high shipping costs and a lengthy 40-day sea freight alternative.

KWE introduced a Sea-Air multimodal solution.



- ① Goods were shipped by sea from Bangladesh to Dubai, leveraging the cost advantages of sea freight over long distances.
- ② In Dubai, the cargo transitioned to air freight, allowing for a faster final leg to Belfast.



This solution effectively reduced shipping costs, shortened transit time, and lowered CO₂ emissions.

Through seamless coordination, KWE ensured smooth and timely delivery, achieving both logistical efficiency and environmental sustainability.



35% Cheaper
vs all-air route






28% Greener
vs all-air route



45% Faster
vs 40-day all-sea route

By leveraging this tailored approach, the client maintained their competitiveness during the peak season, minimized their environmental footprint, and aligned with the fashion industry's sustainability priorities.

What can **KWE** do for you?

-  Offer expert advisory services that are tailored to your specific challenges and problems
-  Create quality and reliable solutions pertaining to your logistic concerns
-  Provide various transportation options with our vast network of carriers



For more information, visit www.kwe.com